

Annexure - IV**DETAILS OF ACTIVE AND PASSIVE FIRE PROTECTION SYSTEM INSTALLED****1. Fire extinguishers –**

Sr. No.	Type of Extinguisher	Capacity	Qty
1	ABC	6 Kg	38 Nos
2	ABC	1 Kg	2 Nos
3	Modular ABC	2 Kg	6 Nos
4	Modular ABC	10 Kg	1 Nos
5	CO ₂	2 Kg	2 Nos
6	CO ₂	4.5 Kg	100 Nos
7	CO ₂	6.5 kg	2 Nos
8	M Foam	9 Lit	22 Nos
9	M Foam	45/50 Lit	9 Nos
Total			182 Nos

**2. Fire hydrant post, Hose Reel and Hose Box -**

Sr. No.	Item	Qty
1	Fire Hydrant Post	21 Nos
2	Hose Box	21 Nos
3	Delivery Hose Pipe	42 Nos
4	Short Branch	21 Nos
5	Fire Service Inlet	1 Nos
6	Water Monitor	2 Nos
7	Hose Reel	6 Nos
8	Sand Bucket	21 Nos

Emcure

PIMPRI-PUNE.



3. Fire Alarm System - Manual Call Point:

Sr. No.	Item	Qty
1	Fire Detection Panel	6 Nos
2	Fire Detection Repeater Panel	1 Nos
3	Smoke Detector	244 Nos
4	Response Indicator	31
5	Manual Call Point	31 Nos
6	Hooter	25 Nos



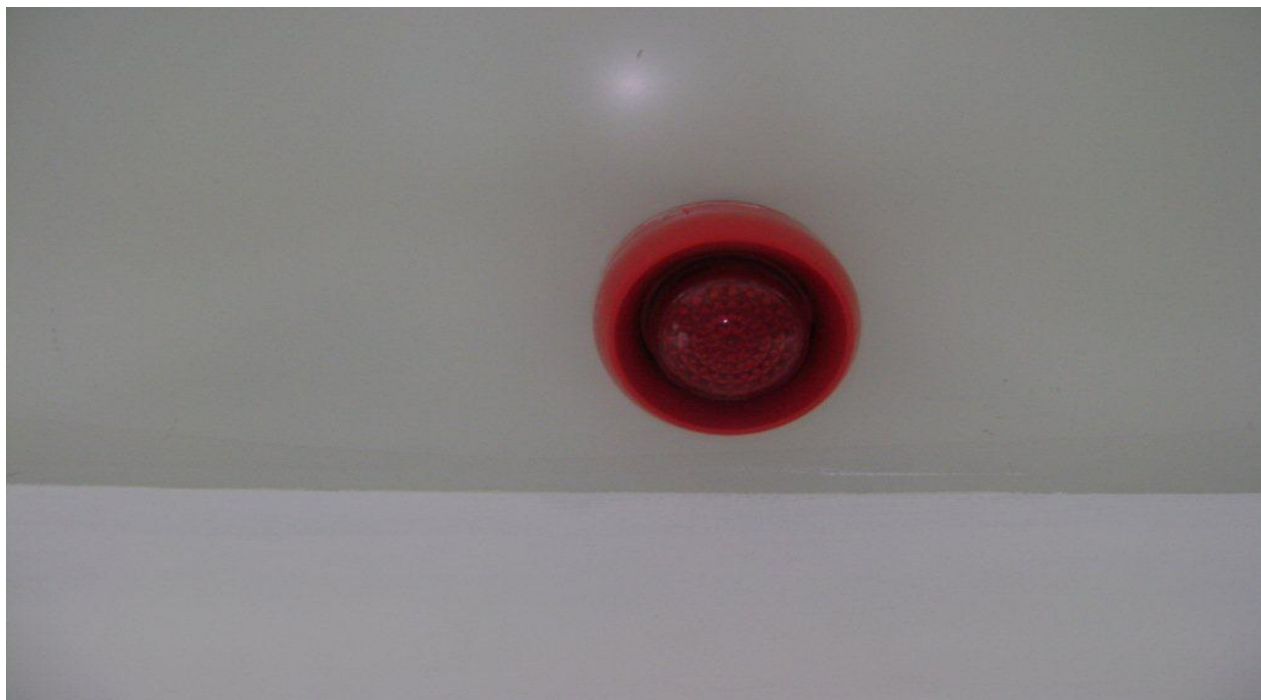
Emcure

PIMPRI-PUNE.

6. Earthing and bonding of Equipments



7. Hooter cum sounder



Emcure

PIMPRI-PUNE.

8. Fire Suit, fire extinguishers, fire hydrant point and fire bucket stand.



9. Self-contained breathing apparatus set – 05 Nos & 03 Nos Spare SCBA Cylinder



Emcure

PIMPRI-PUNE.

10. Breathing airline respirator- 02 Nos



11. Fixed gas detection system LEL /Oxygen / Hydrogen – 27 Nos

12. Spill control kit – 12 Nos

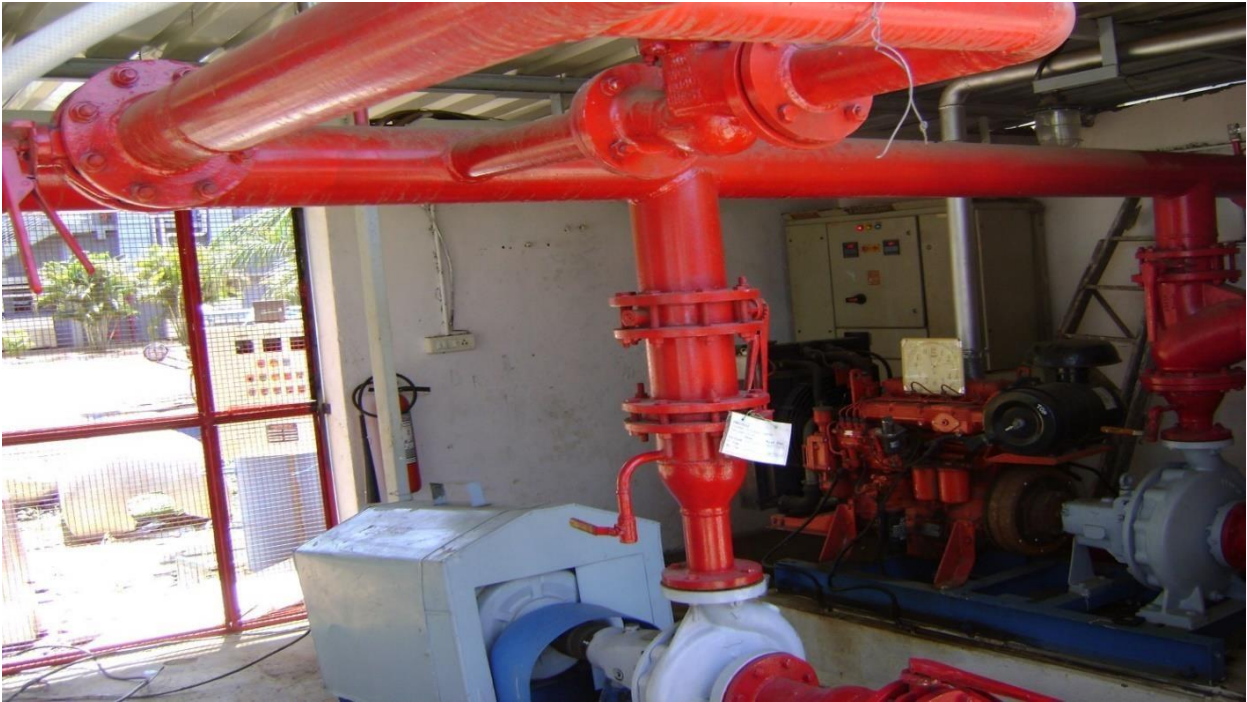


Emcure

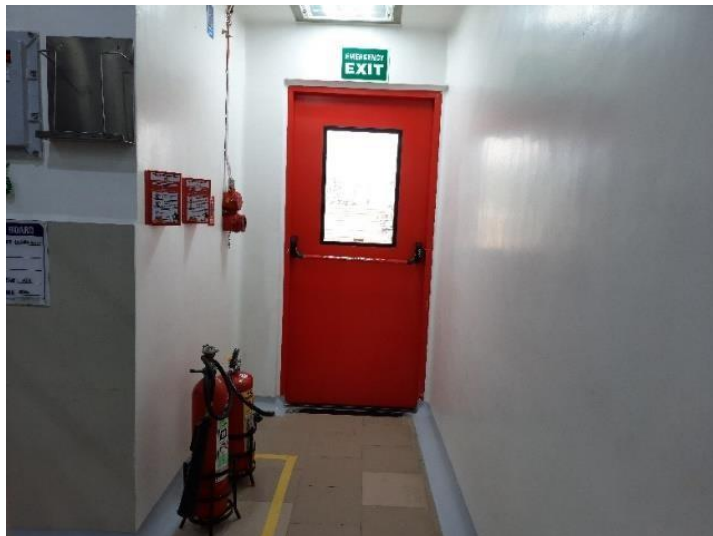
PIMPRI-PUNE.

13. Fire Hydrant System

Sr. No.	Fire Hydrant System	Capacity	Qty
1	Water Tank	100 m ³	01 Nos
2	Main Electric Pump	137 m ³ /hr	01 Nos
3	Jokey Pump	11 m ³ /hr	01 Nos
4	D.G. set Pump	138 m ³ /hr	01 Nos



14. Emergency Exit Provision & Signages



15. Emergency Escape Route Plan & ESD Plate at entrance point

